

acc. to JIS B 8313

50 Hz
 Capacity Q up to 170 l/s (620 m³/hr)
 Total head H up to 100m
 Product temperature t - 30 up to 140°C
 Pump discharge pressure Pd up to 16 bar
 Pump sizes DN 32 to 150 mm

Applications

General water supply, irrigation and drainage applications; used to handle seawater, brine, alkali and condensate; used to circulate hot water, cold water and oil; used as blending and loading pumps etc.

Product Pumped

Clear liquids not causing corrosion and/or erosion to the used materials.

Design

End suction, vertical centerline discharge nozzle.
 Back pull-out design allows the removal of the rotor and bearing bracket without removing the pump casing or motor. The casing wear ring is renewable.
 The shaft is protected in the sealing area by a renewable sleeve.

Impeller

Closed, radial flow impeller fitted with renewable protective wear ring at the neck; hydraulically balanced by balancing holes.
 Pump sizes 50x32-125, 50x40-125 and 65x50-125 have unbalanced impeller without balancing holes.

Bearings

Oil-bath lubricated deep groove ball bearings.

Shaft Seals

Soft-packed stuffing boxes or single acting mechanical seals are available

Flanges

JIS 10 kgf/cm² F.F.

Materials

Part No.	Part designation	Materials
1020	Volute casing	Cast iron, Bronze, Stainless-steel
1610	Casing cover	
2300	Impeller	
5020	Casing wear ring	
5030	Impeller wear ring	
2100	Shaft	Carbon steel, Stainless-steel
5240	Shaft protecting sleeve	Stainless-steel

Materials mentioned above are standard; other materials are also available on request.

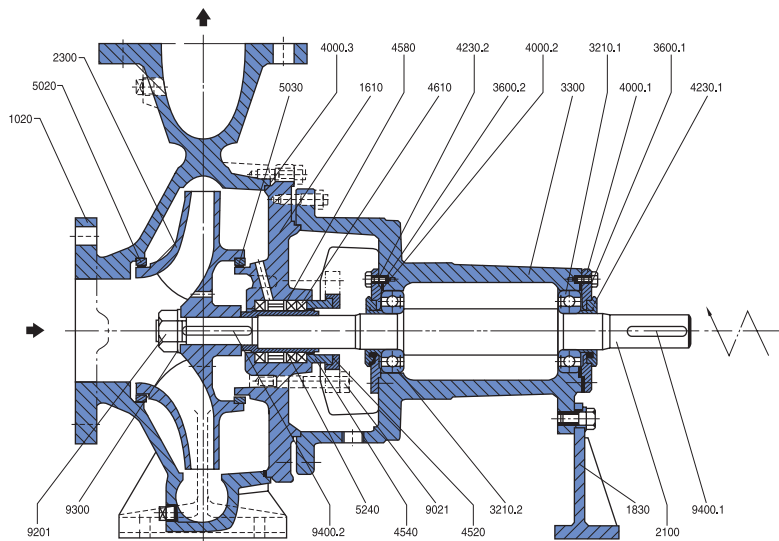
Drive

Electric motors are used as standard, Engines are also available on request.

Direction of rotation

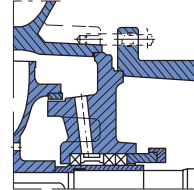
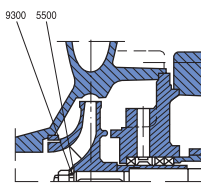
Clockwise viewed from the drive end.

Sectional Drawings and List of Components



Impeller unbalanced

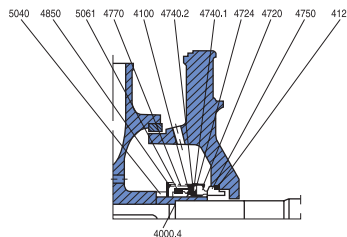
"Push-in" discharge cover



50X 32 - 125
50X 40 - 125
65X 50 - 125

50X 32-125
50X 32-160
50X 40-125
50X 40-160
65X 50-125
65X 50-160
80X 65-125
80X 65-160
100X 80-125
100X 80-160
125X100-160.1
125X100-200.1
125X100-160
125X100-200
150X125-200
150X125-315
200X150-200
200X150-250
200X150-315

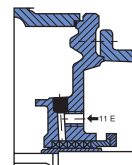
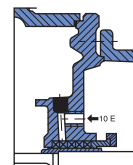
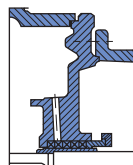
**Shaft Seals
Mechanical seal**



NB

NC

VH



Part No.	Part Designation	Part No.	Part Designation	Part No.	Part Designation	Part No.	Part Designation
1020	Volute casing	4000.2	Flat gasket	5240	Shaft protecting sleeve	4720	Washer
1610	Casing cover	4000.3	Flat gasket	5500	Washer	4724	Back up ring
1830	Support foot	4000.4	Flat gasket	9021	Gland bolt	4740.1	Stopper
2100	Shaft	4230.1	Labyrinth ring	9201	Hexagonal nut	4740.2	Stopper
2300	Impeller	4230.2	Labyrinth ring	9300	Spring washer	4750	Seat
3210.1	Ball Bearing	4520	Gland	9400.1	Key	4770	Spring
3210.2	Ball bearing	4540	Gland bush	9400.2	Key	4850	Stopper
3300	Bearing housing	4580	Lantern ring		(Mechanical Seal)	5040	Distance ring
3600.1	Bearing cover	4610	Gland packing			5061	Spline ring
3600.2	Bearing cover	5020	Casing wear ring	4100	Packing		
4000.1	Flat gasket	5030	Impeller wear ring	4120	Q-ring		